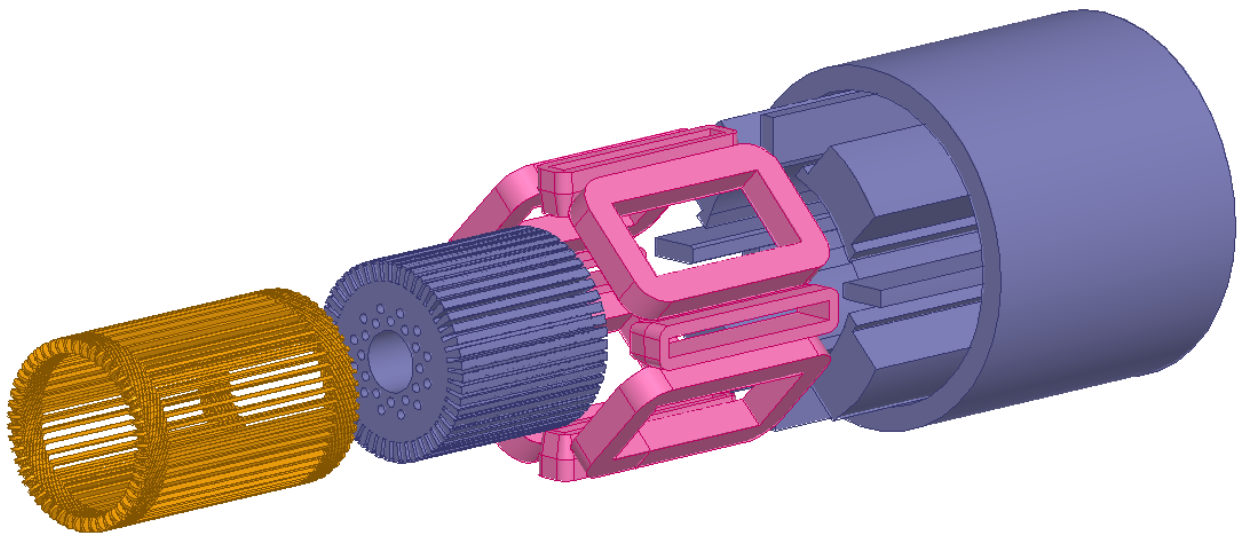
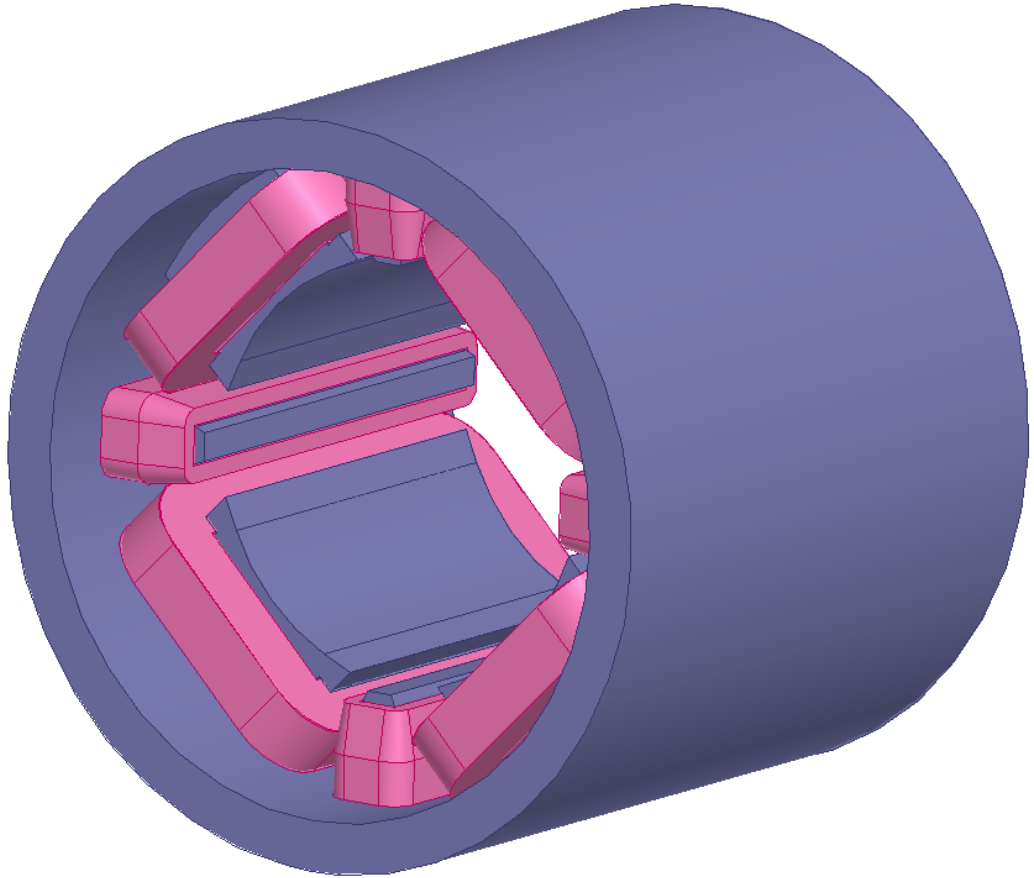
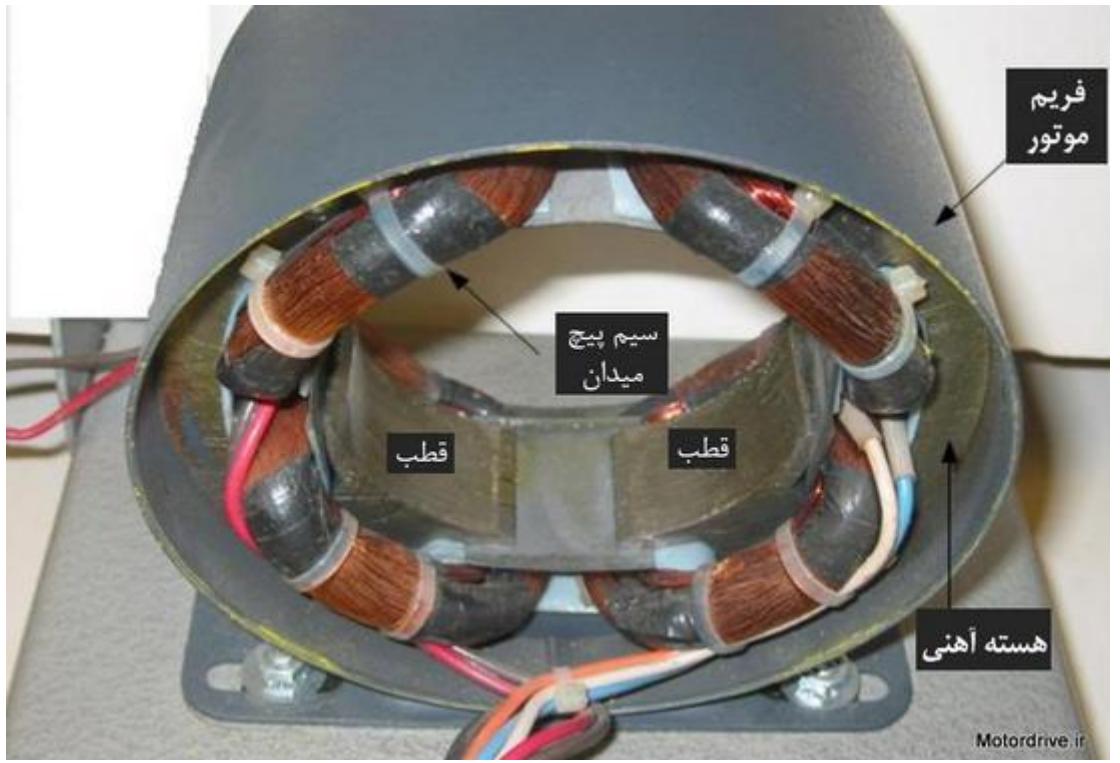


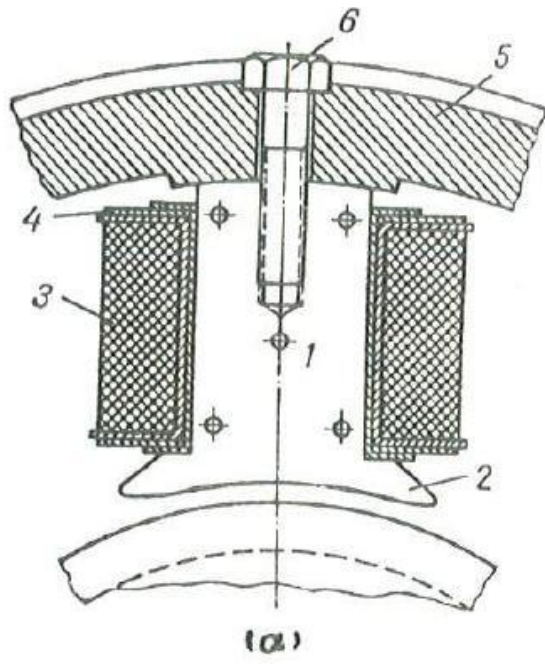
Time =-1



Time =-1



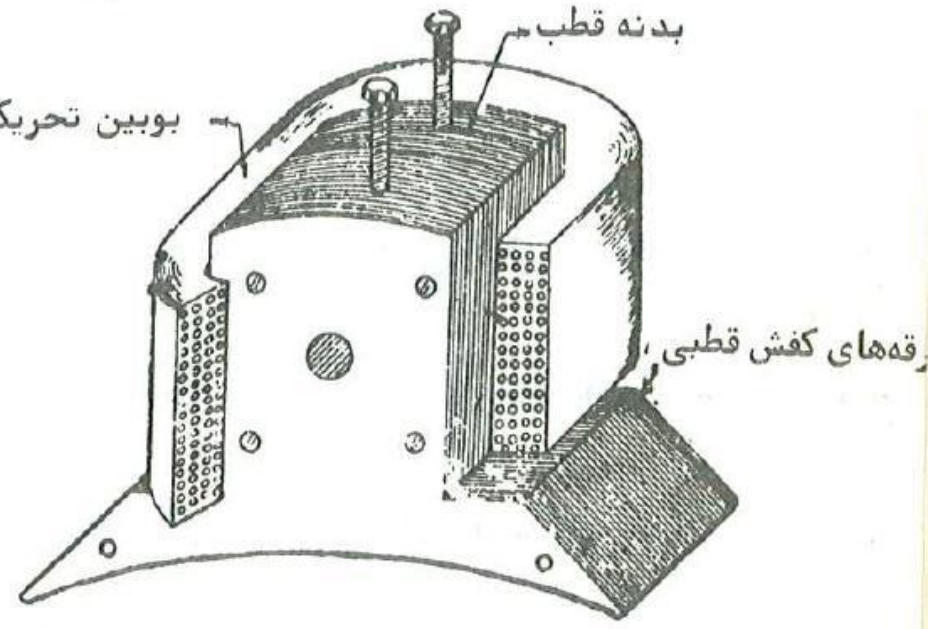
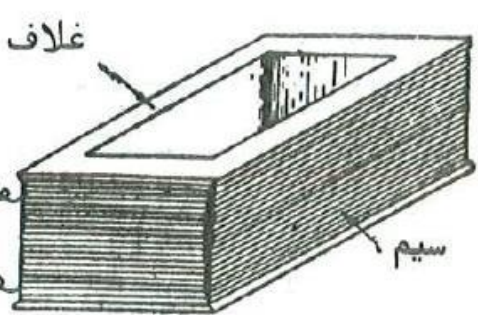
Time =-1

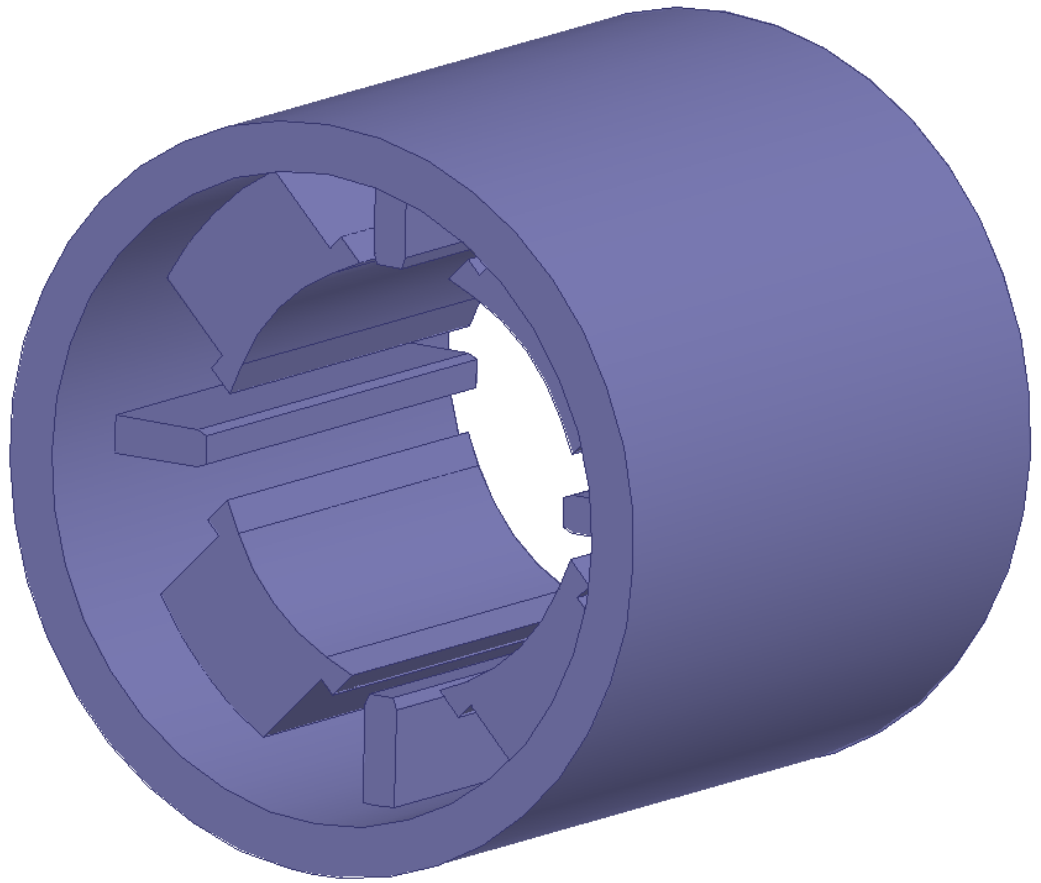


ورقه‌های

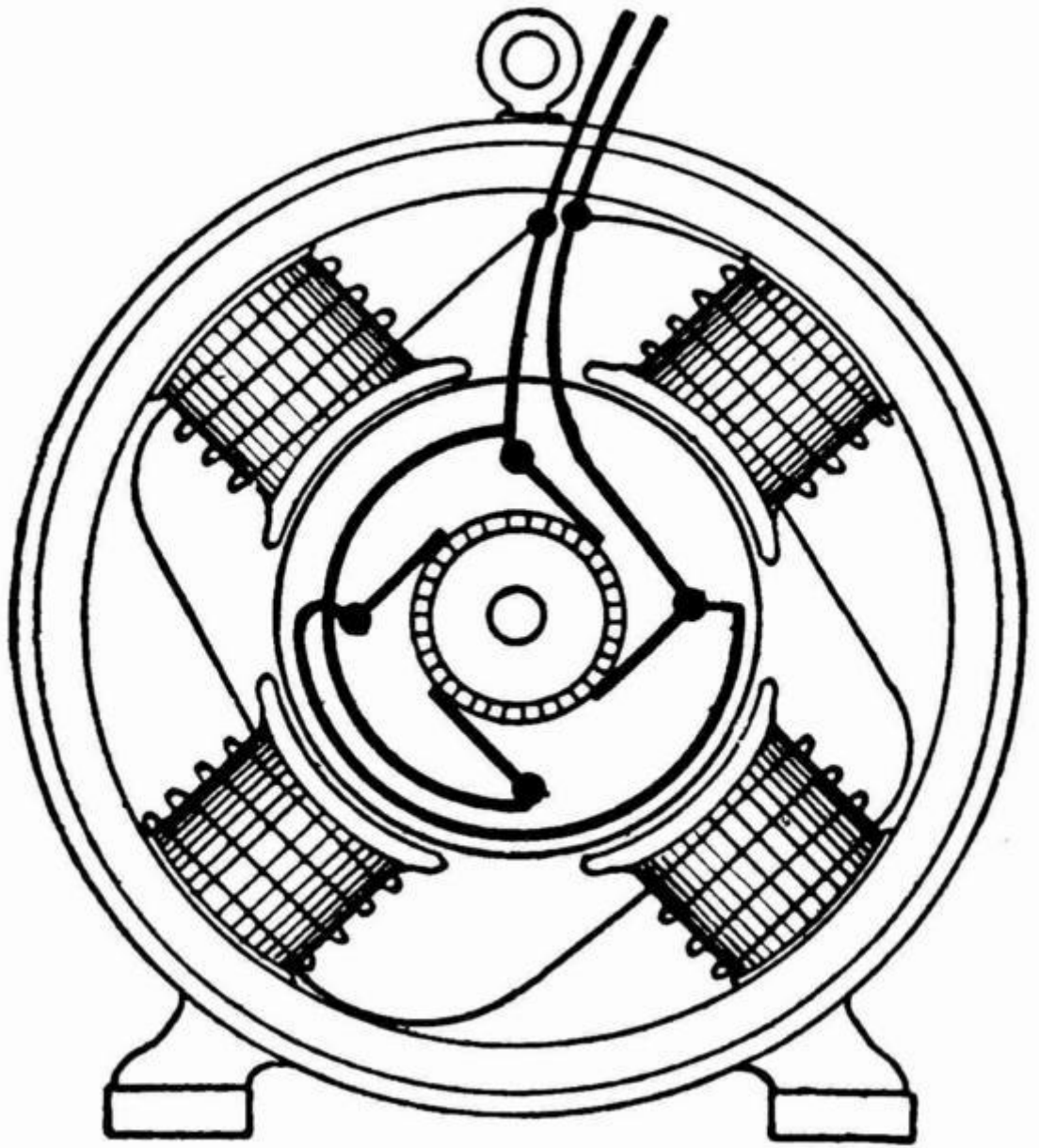
بوبین تحریک

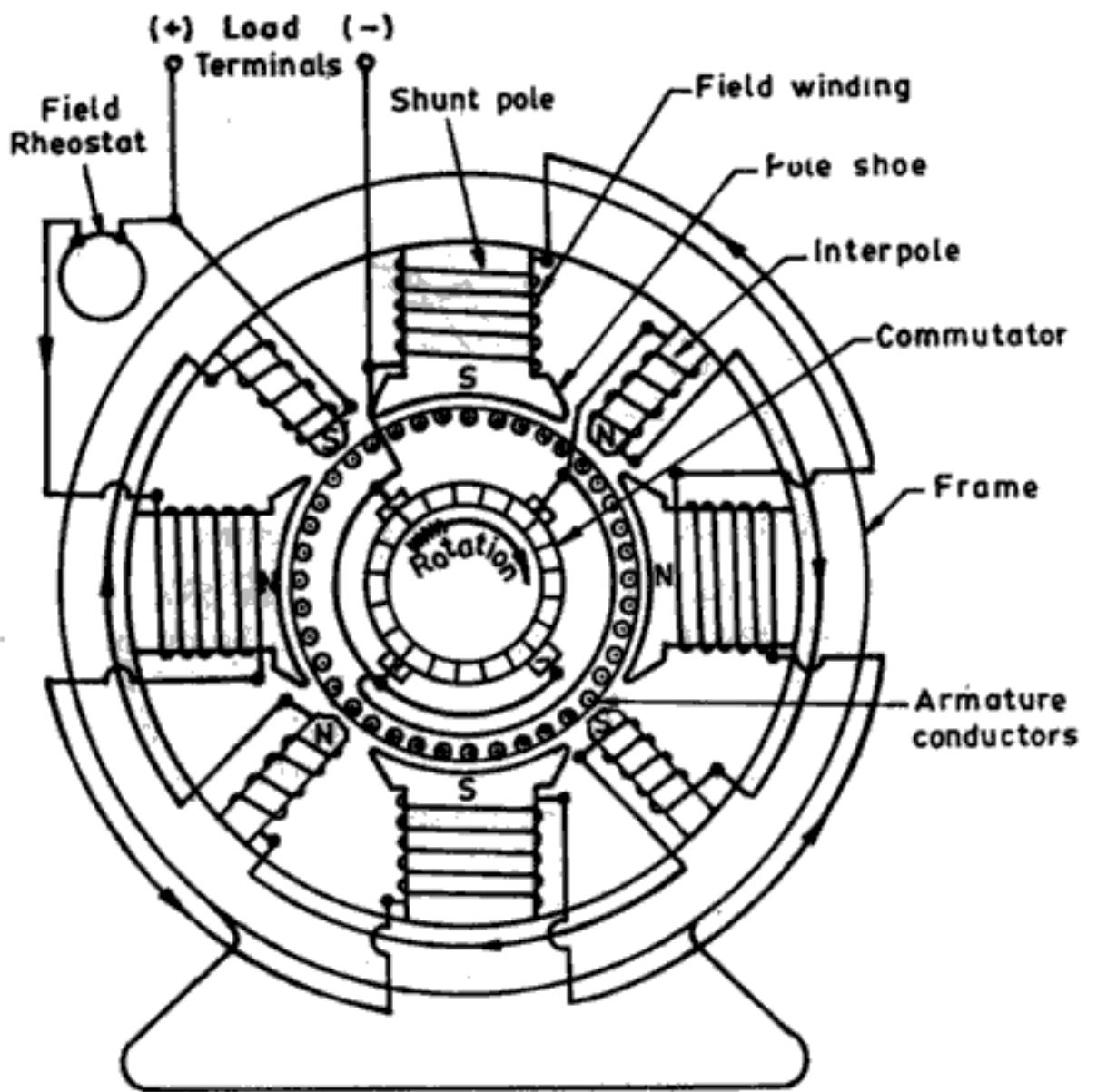
بدنه قطب



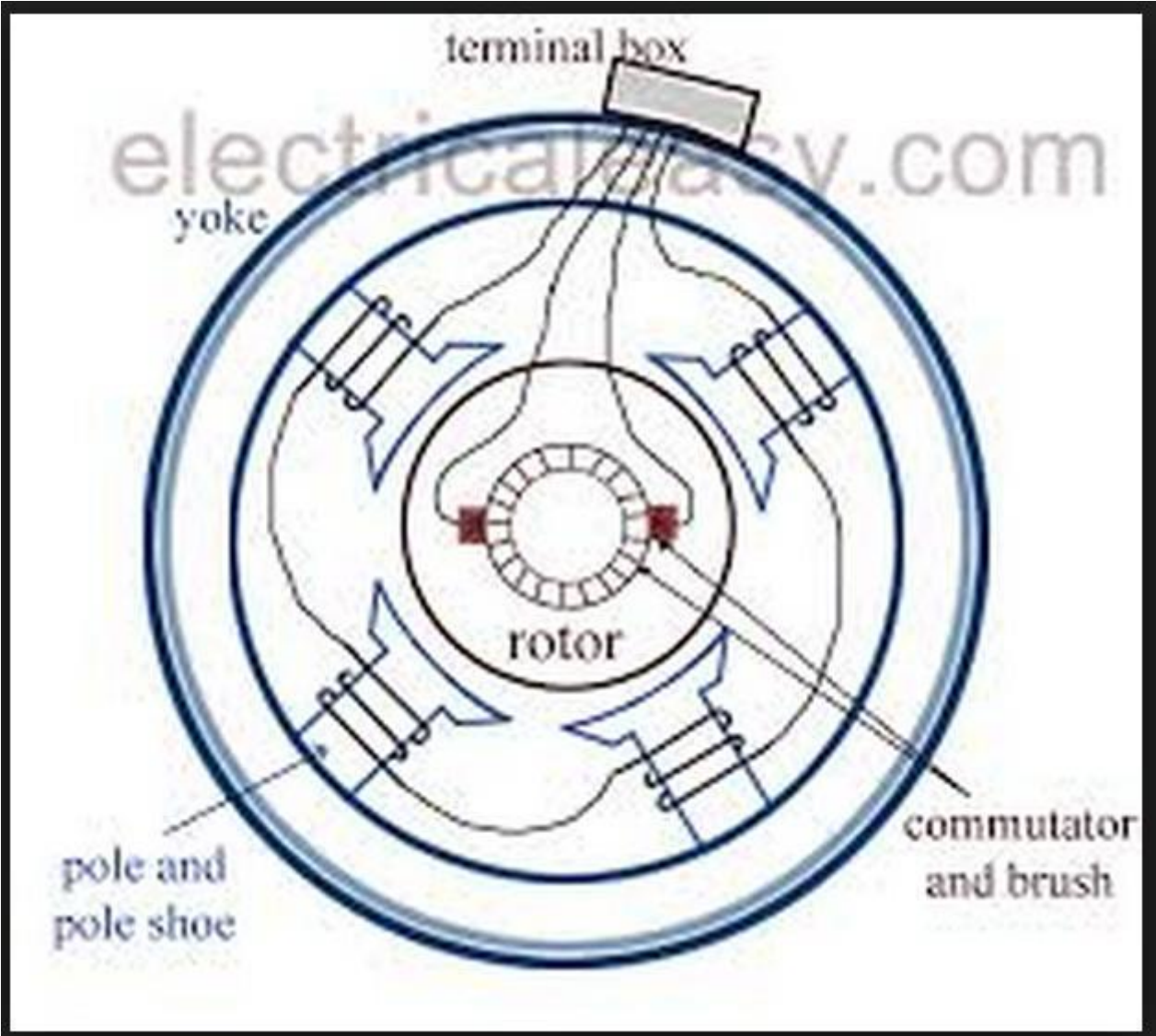


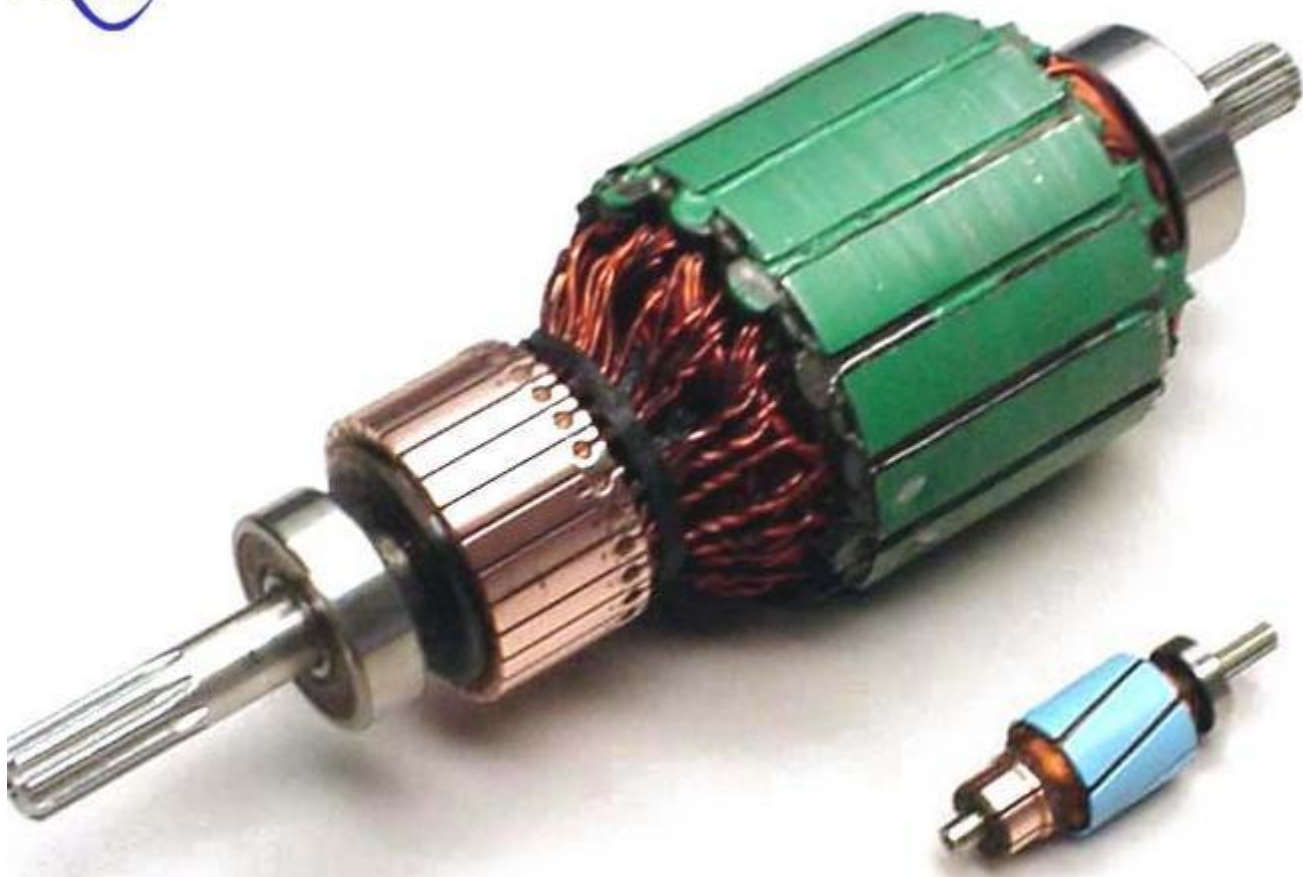
Time = 1



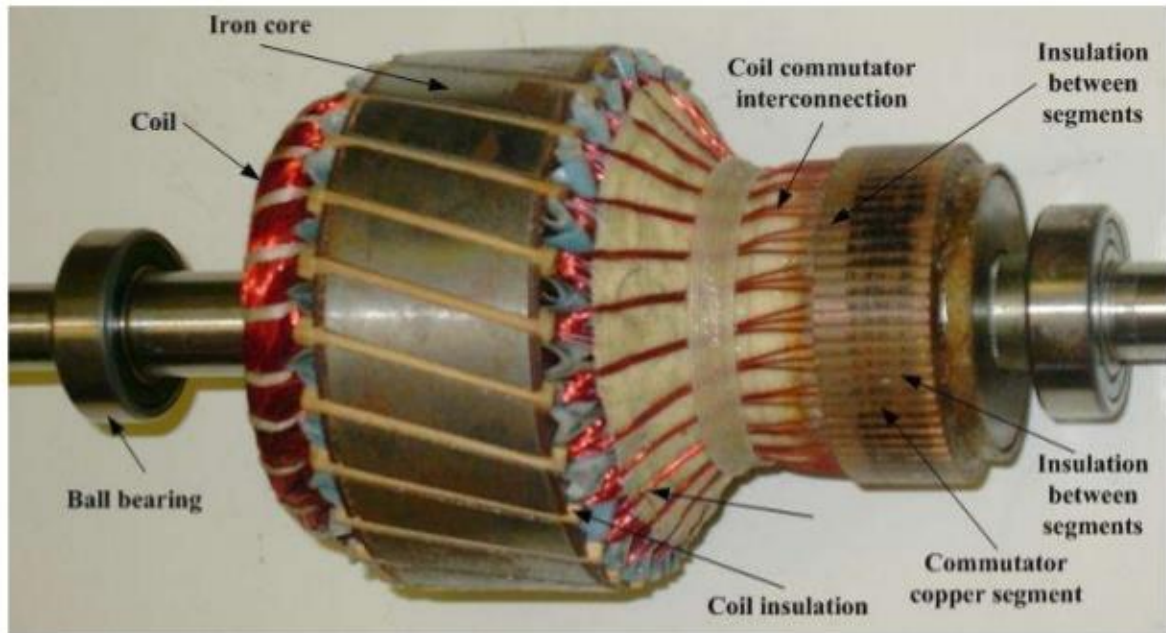




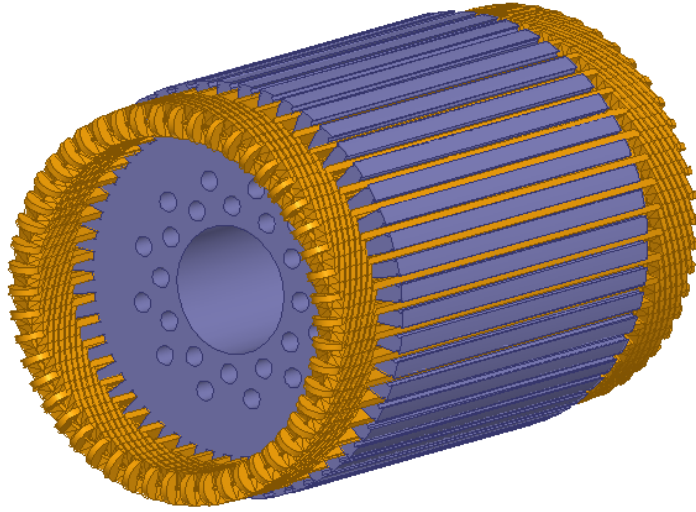




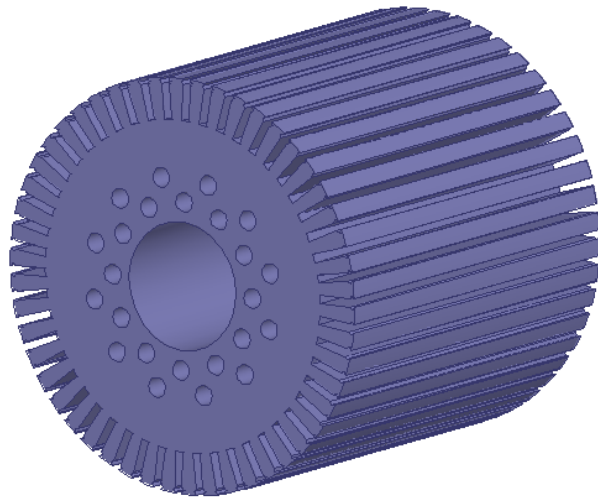
# DC Machine Construction



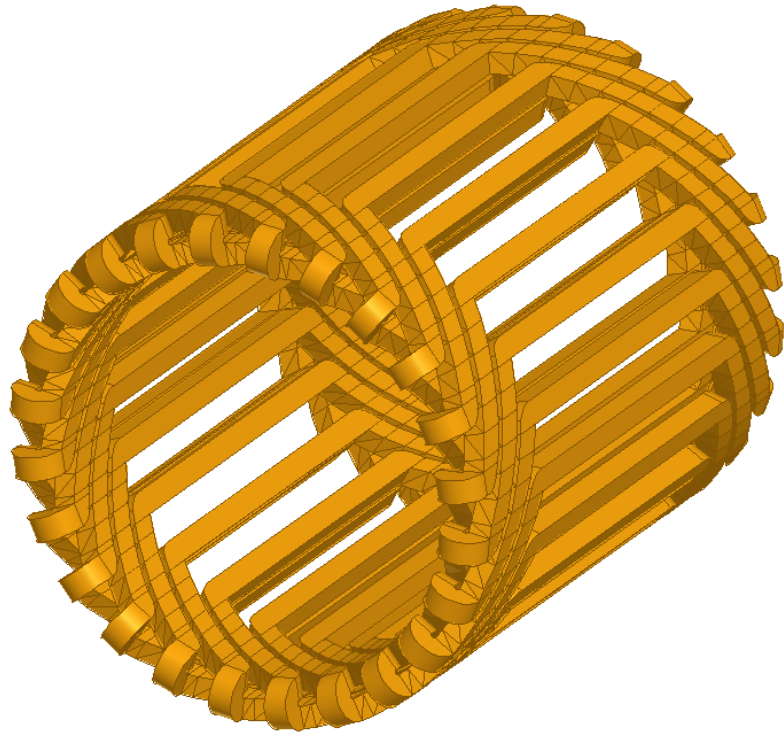
**Figure Armature of a dc motor.**



Time = 1



Time = 1

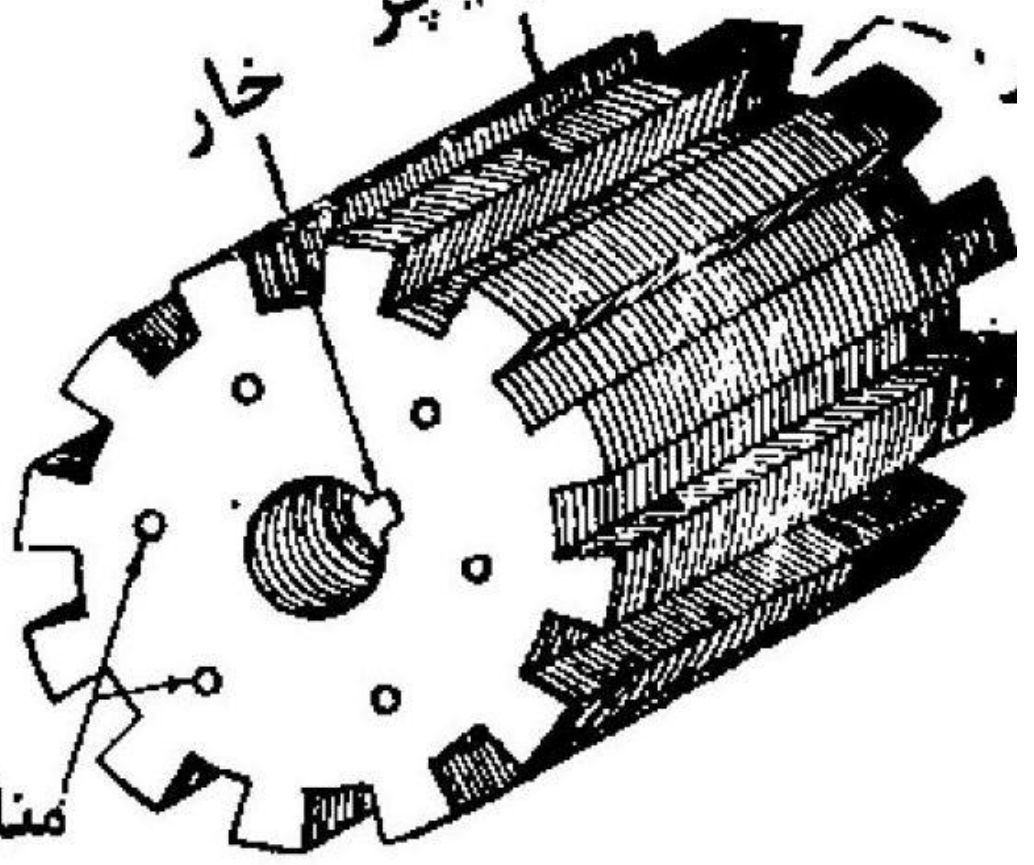


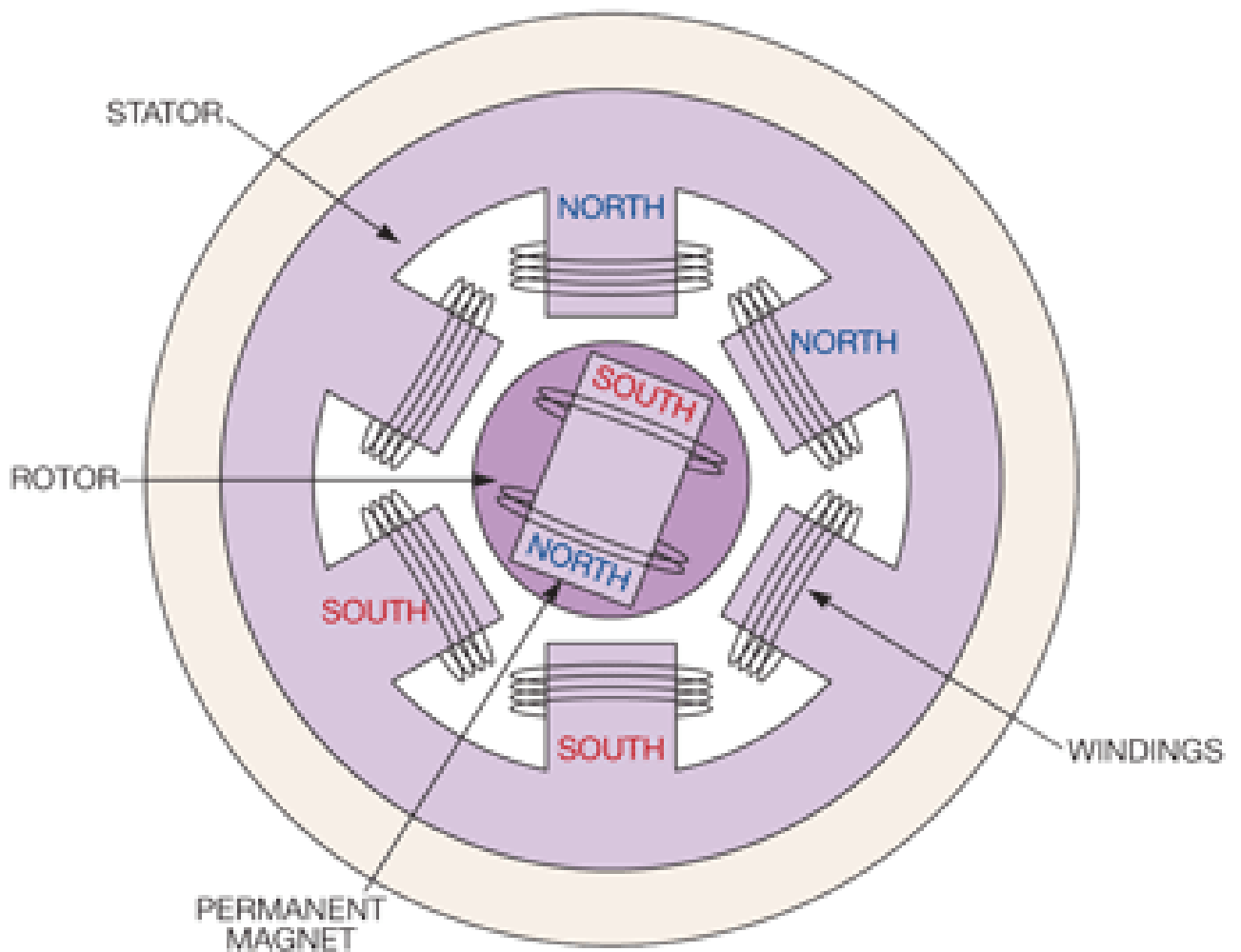
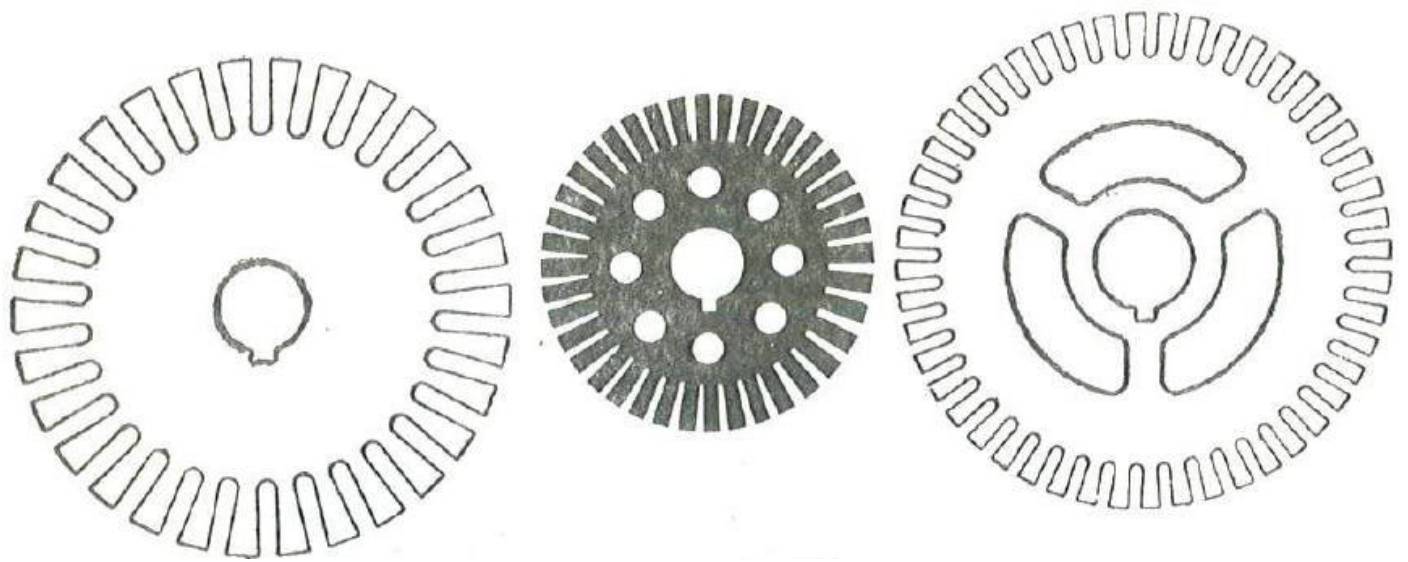
Time = 1

ورقہ آرمیچر

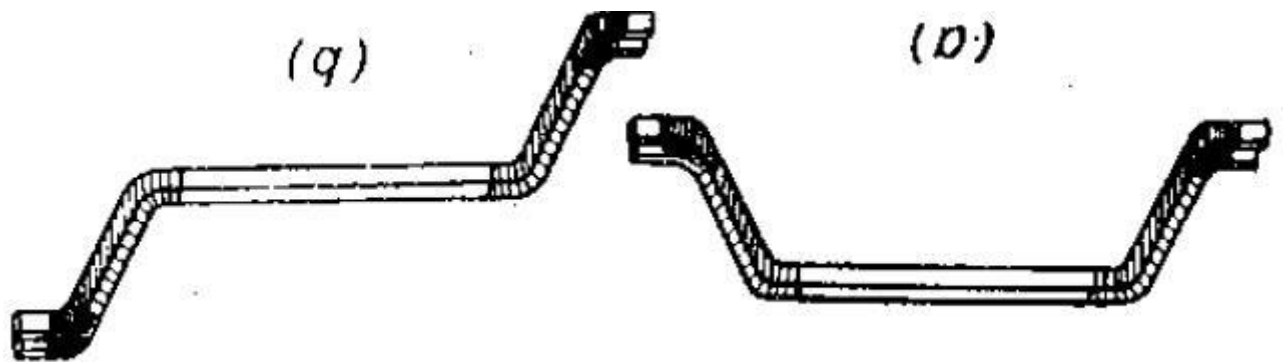
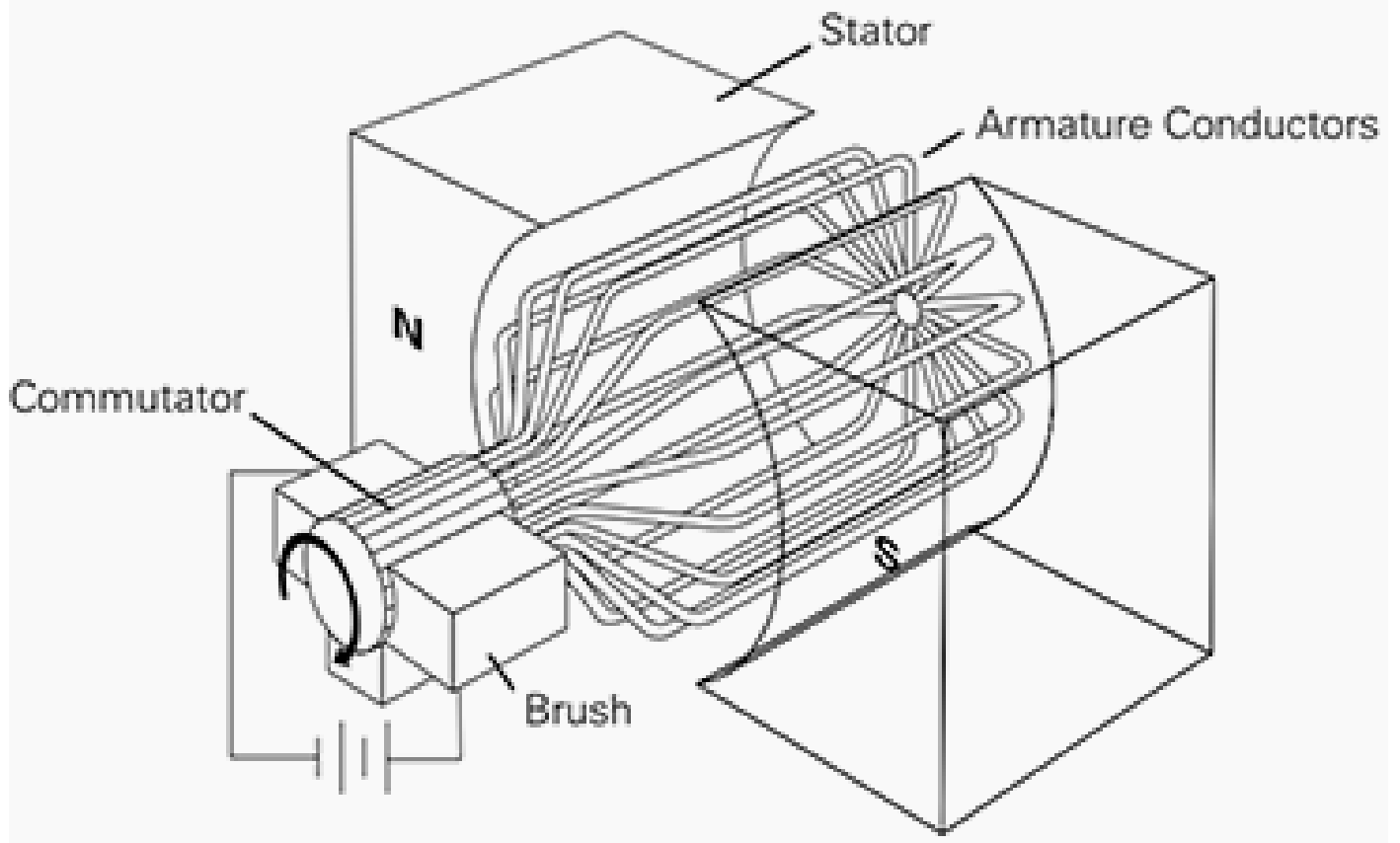
خار

منافذ عبور ہوا



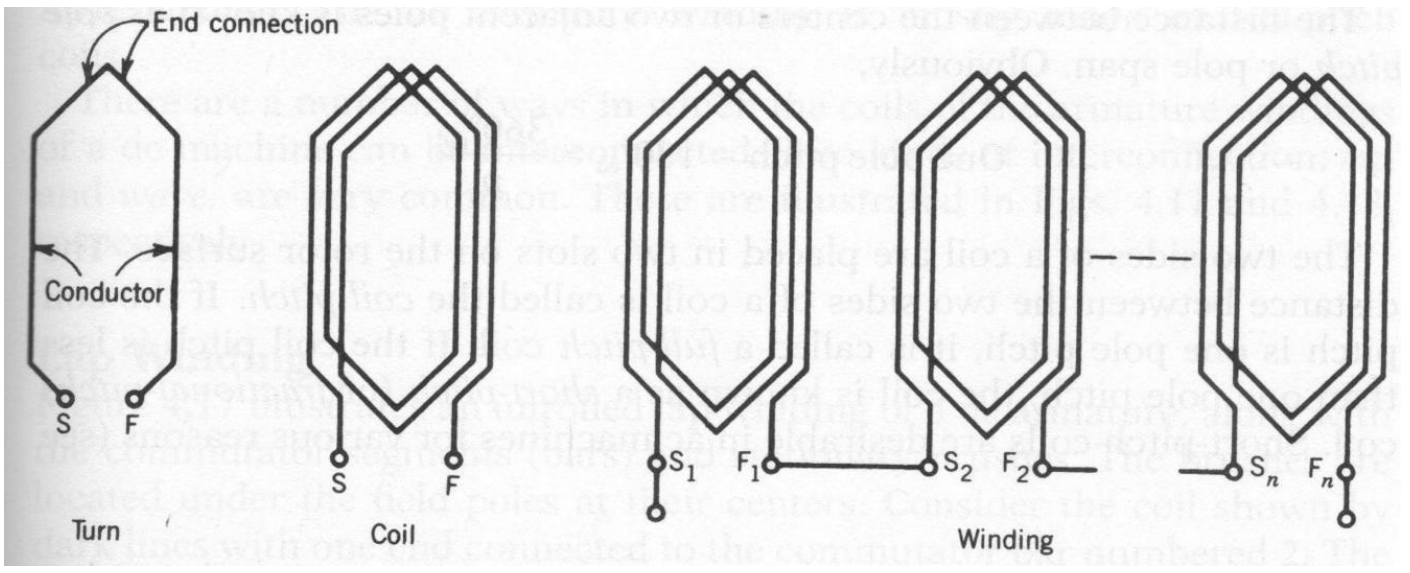
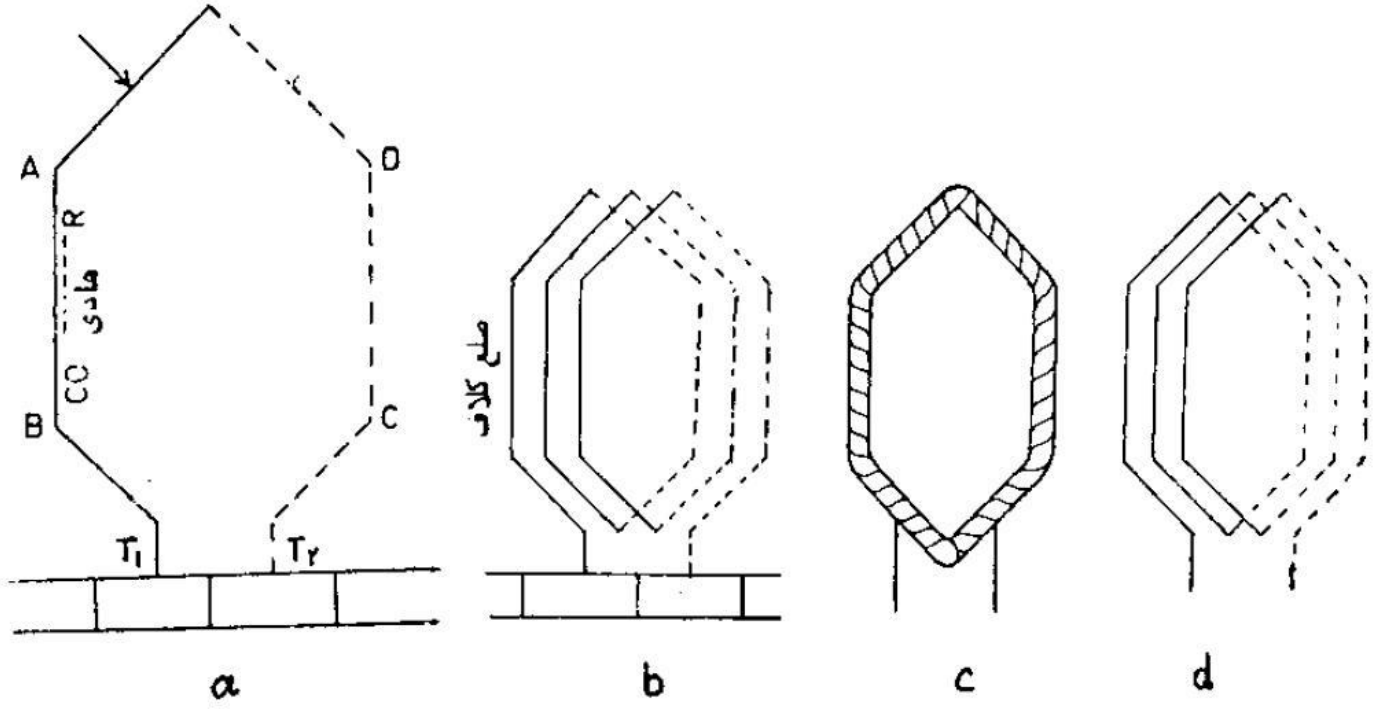


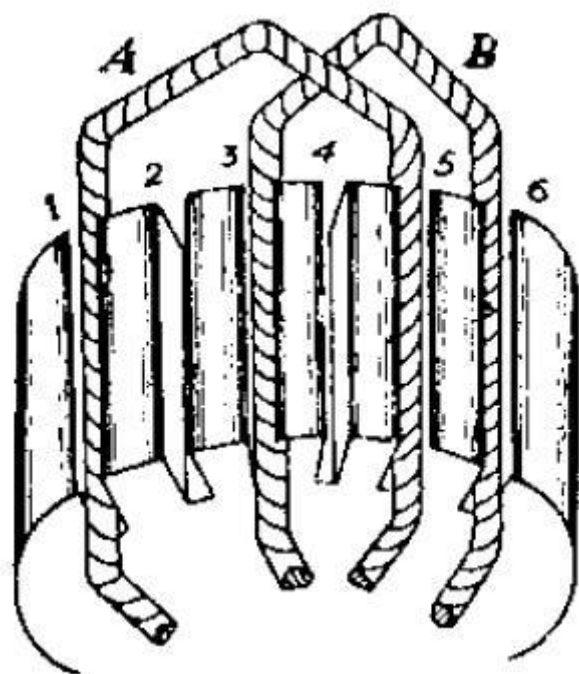
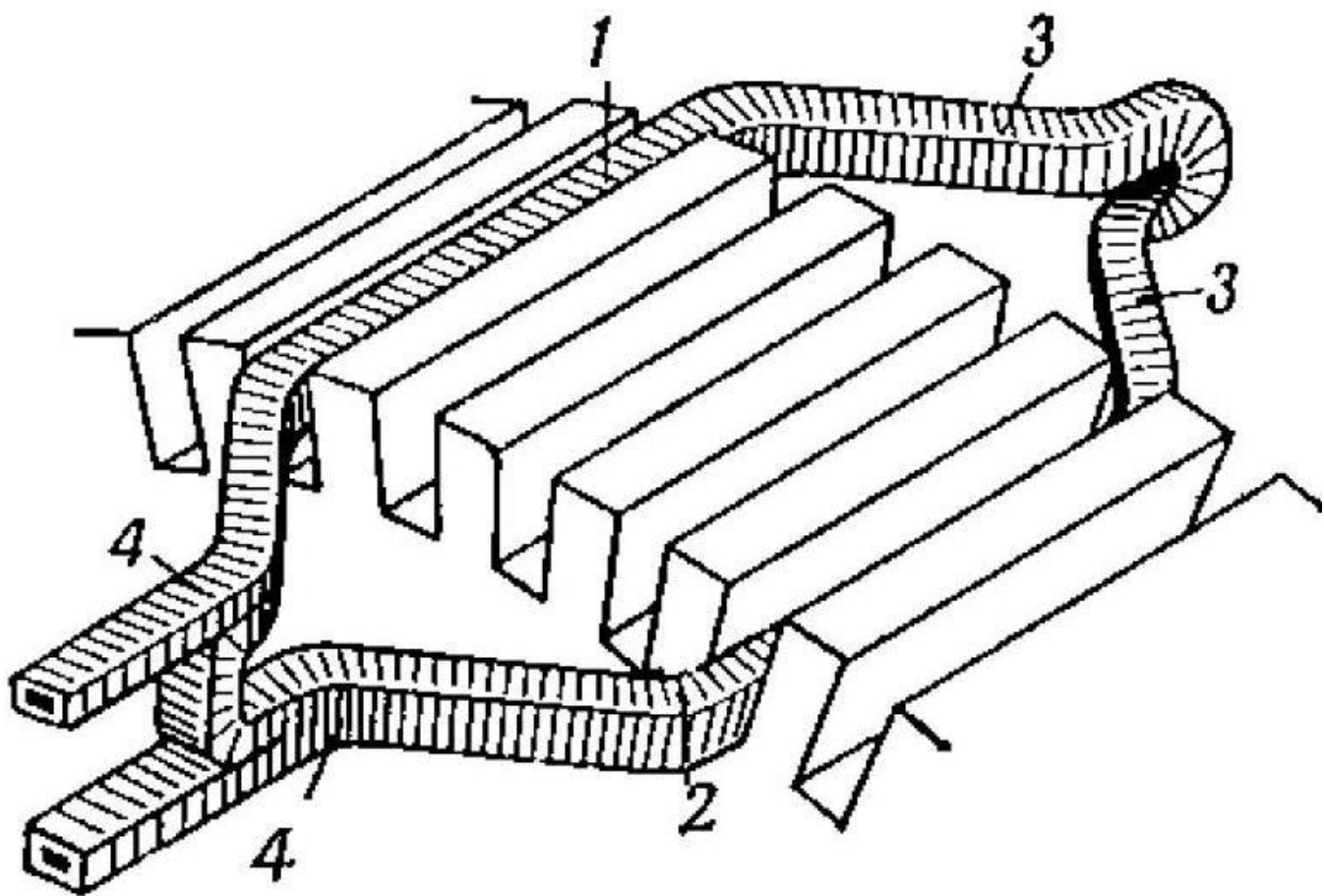
**Figure 1** BLDC motors have a rotor with a permanent magnet containing north and south poles. The stator comprises multiple electromagnets.

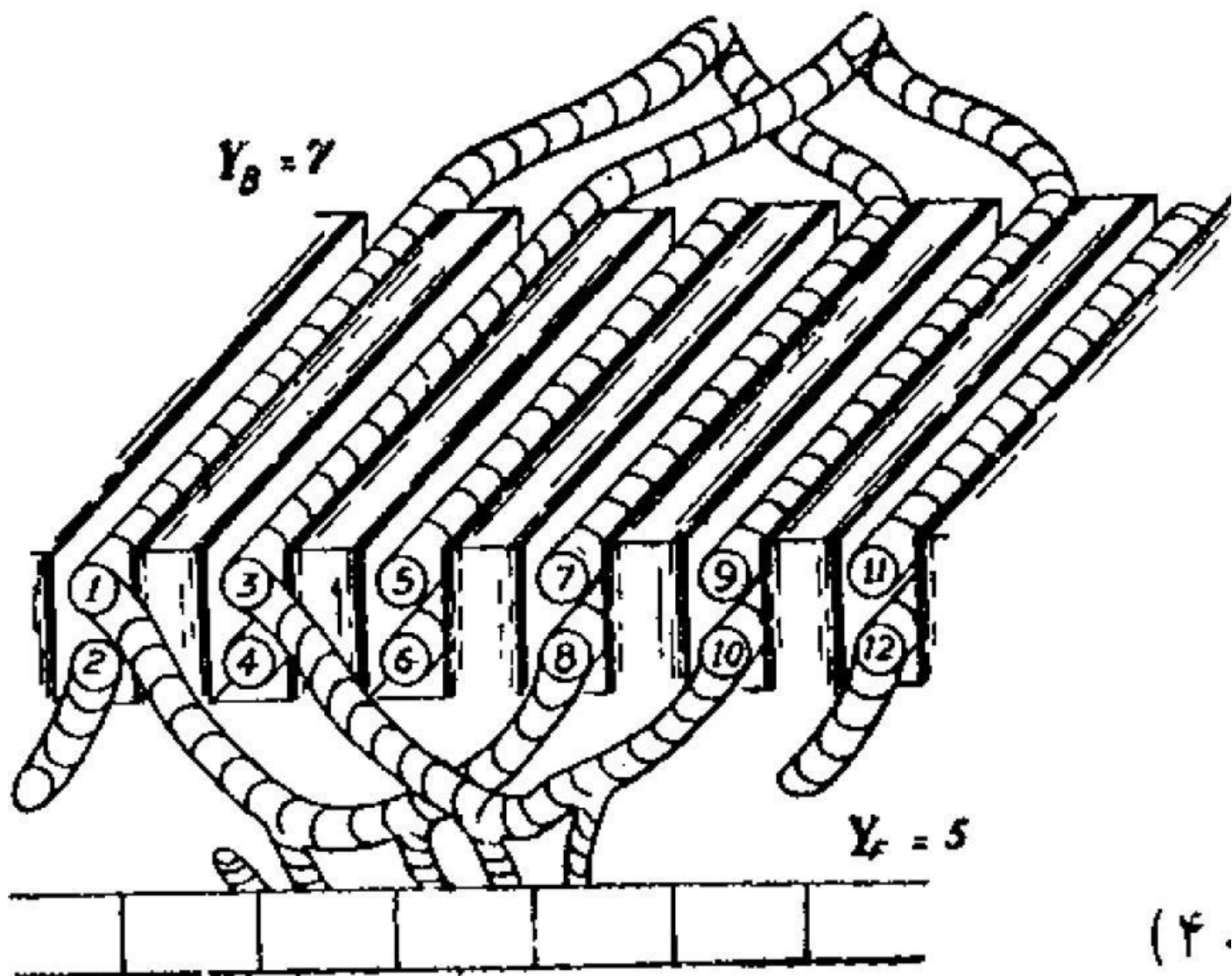




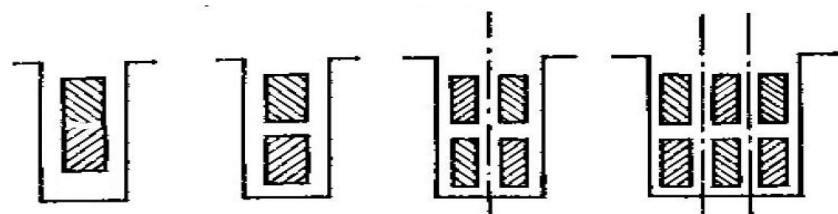
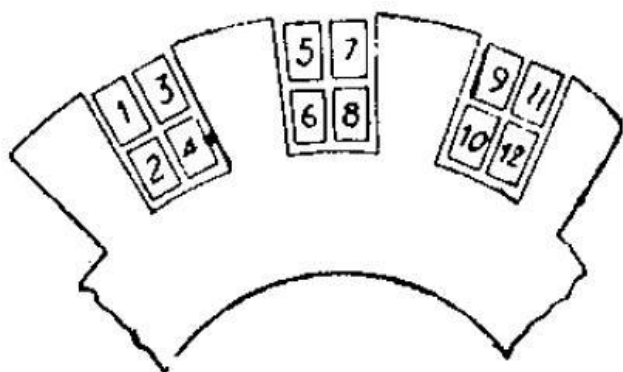
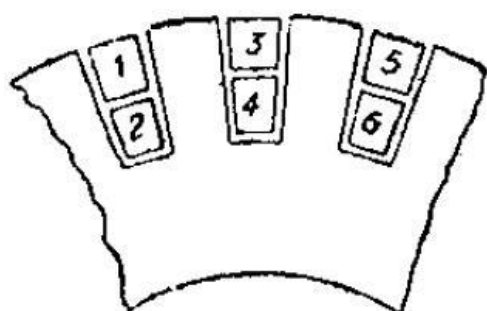
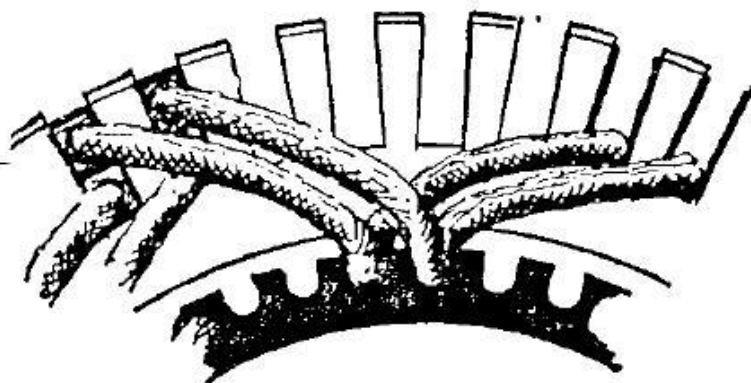
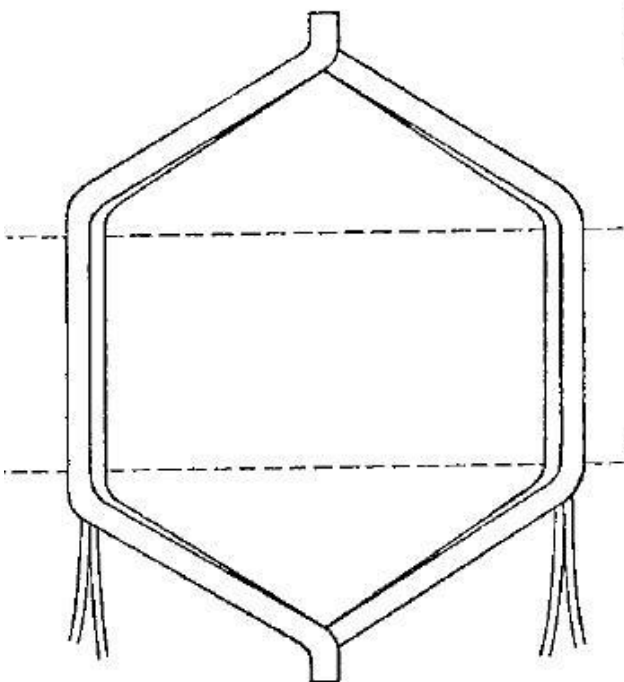
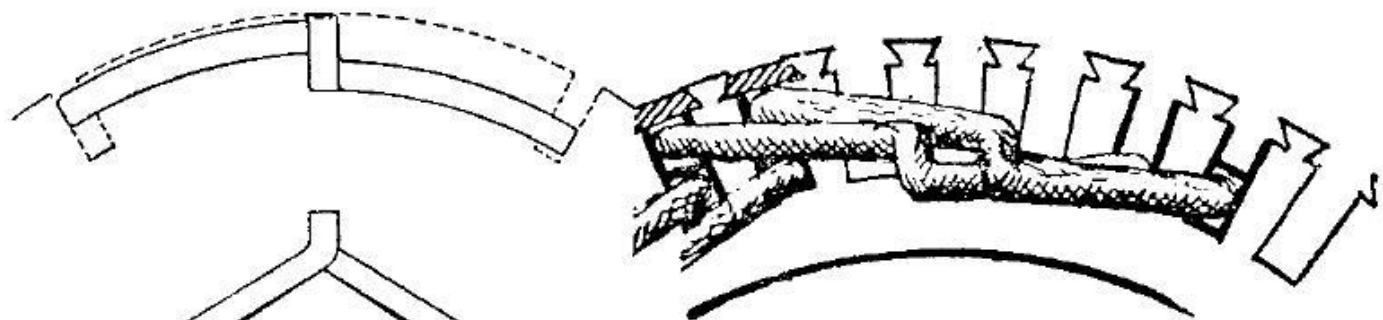
اتصال پيشانی

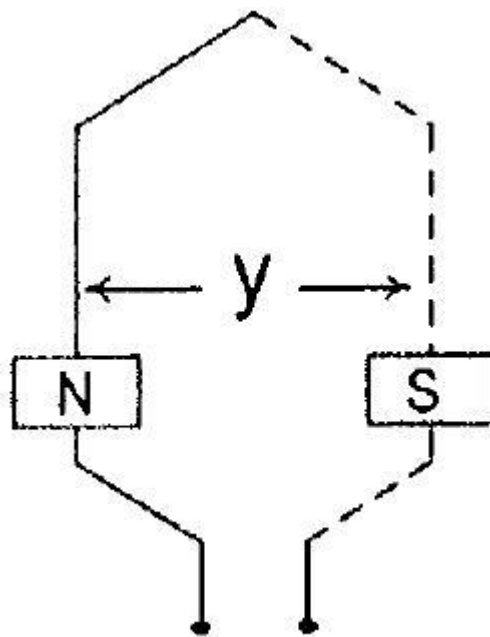
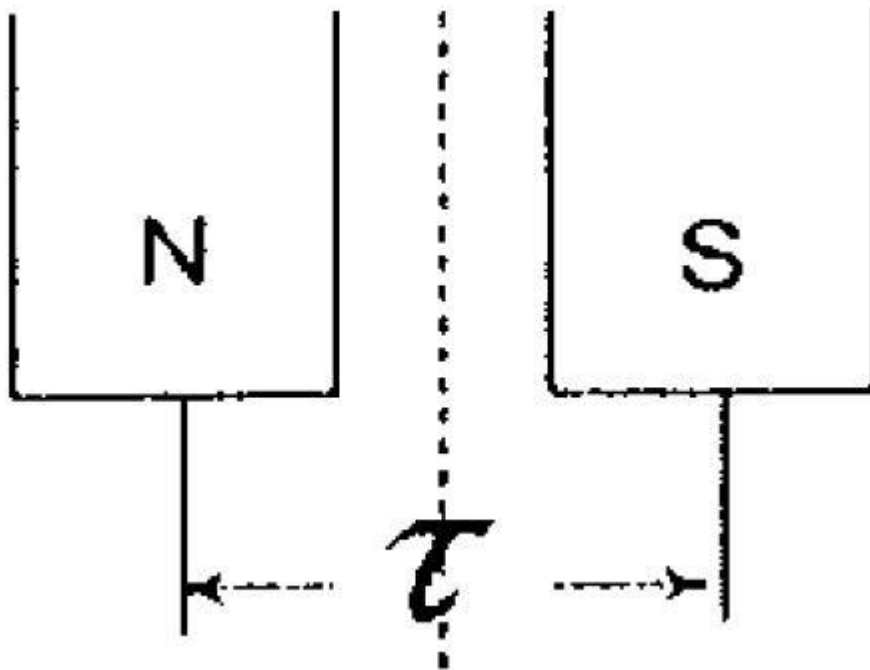
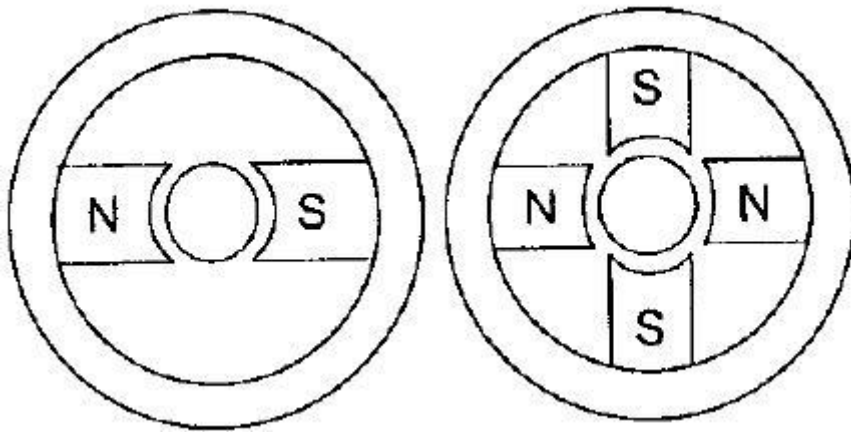






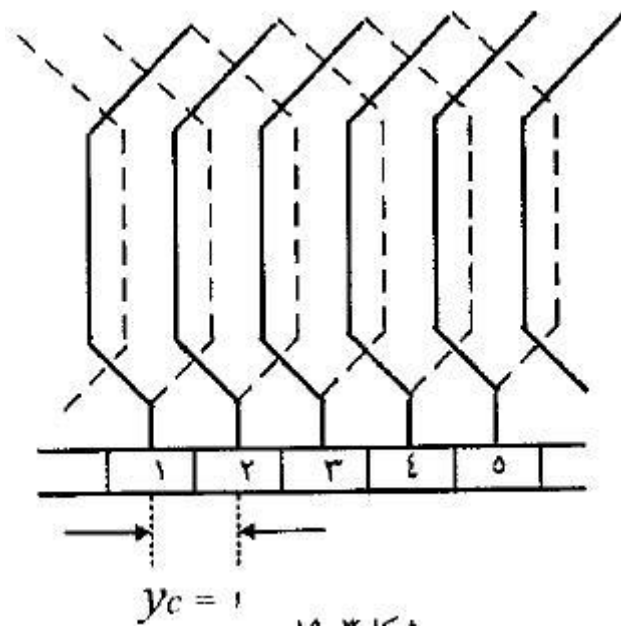
(F.)

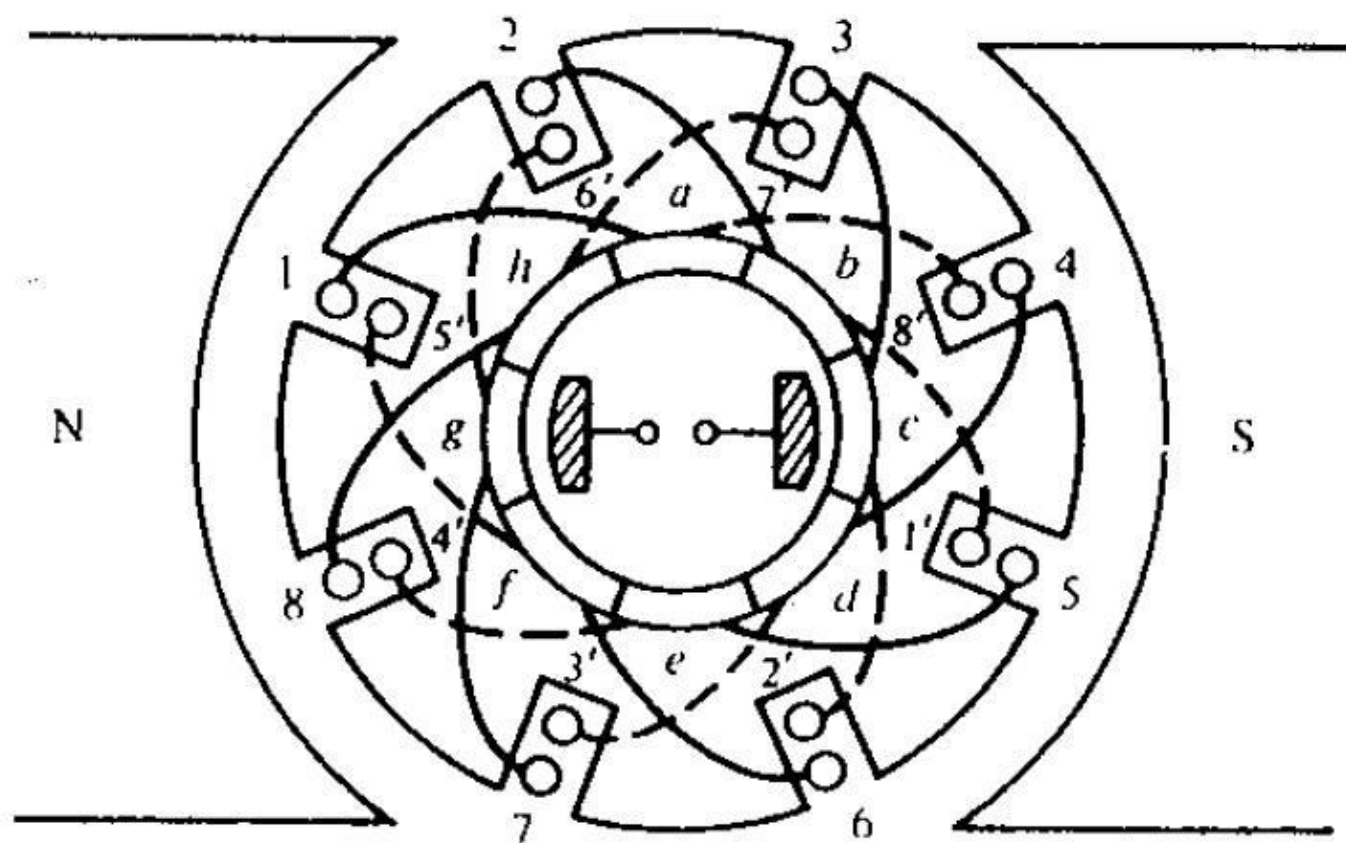


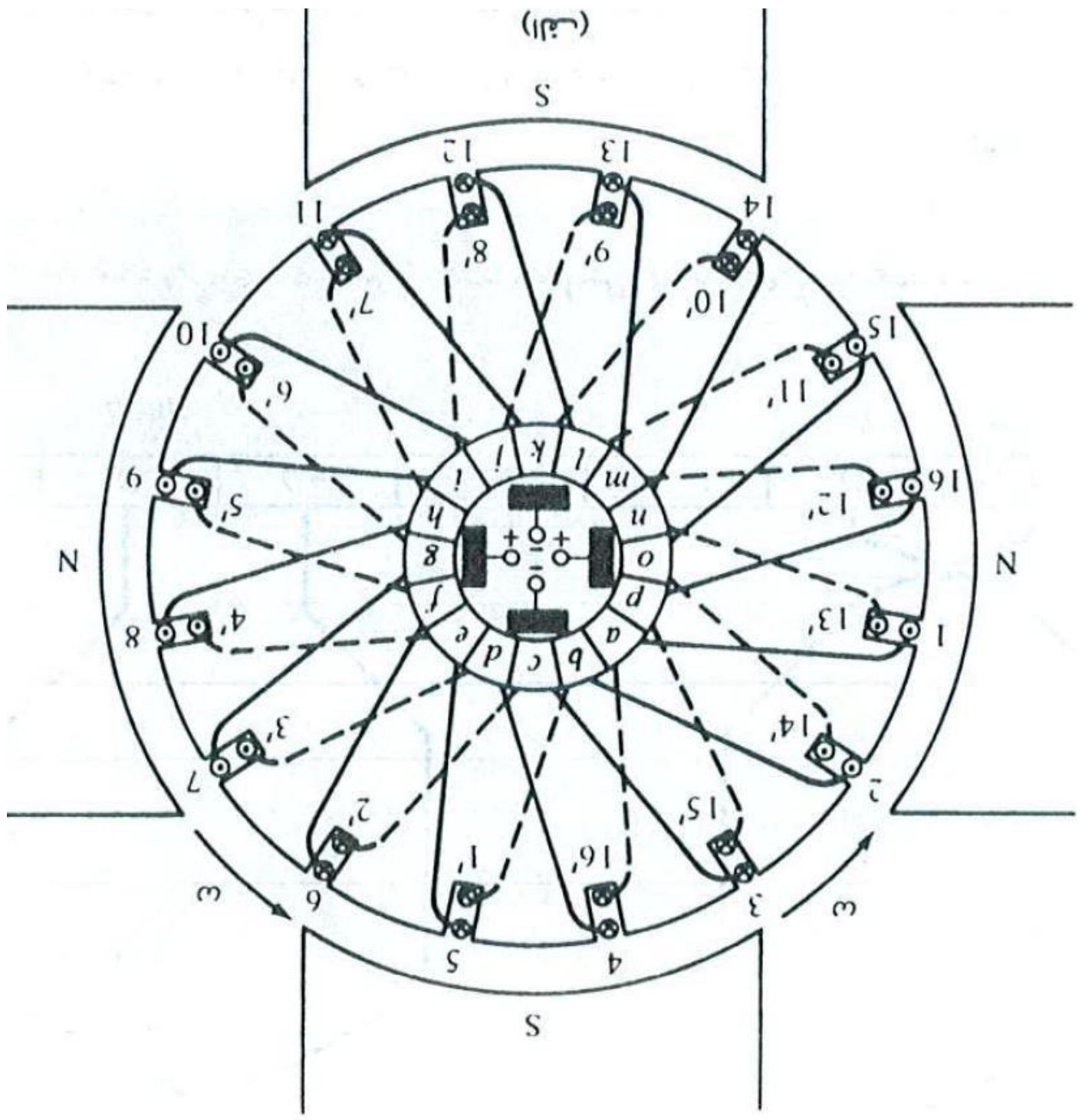


$$\frac{z}{\tau} = \frac{\frac{p}{\gamma} \times 37.0^\circ e}{11.0^\circ e} \Rightarrow \tau = \frac{z}{p}$$

$$y \leq \frac{z}{p}$$









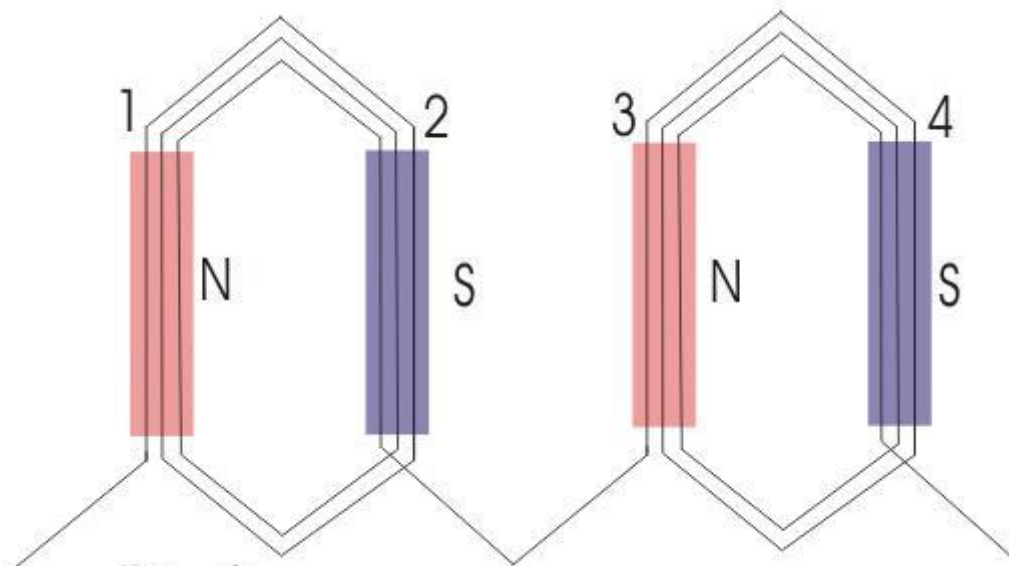
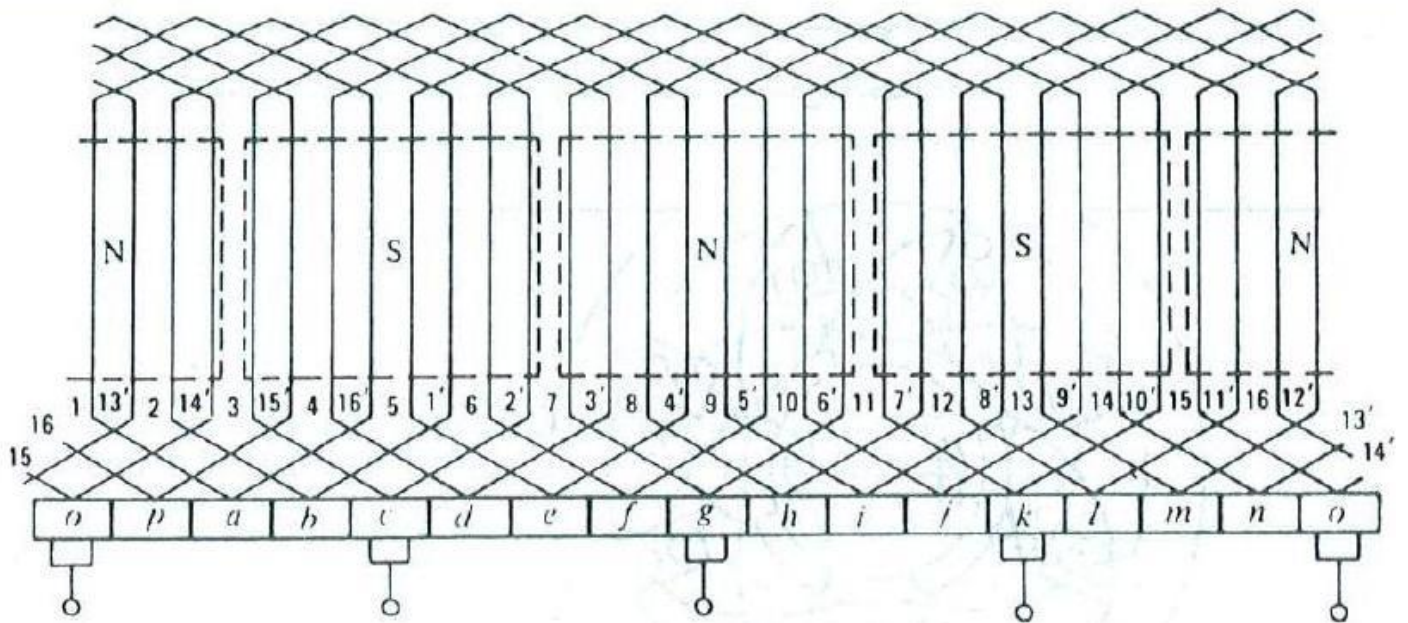
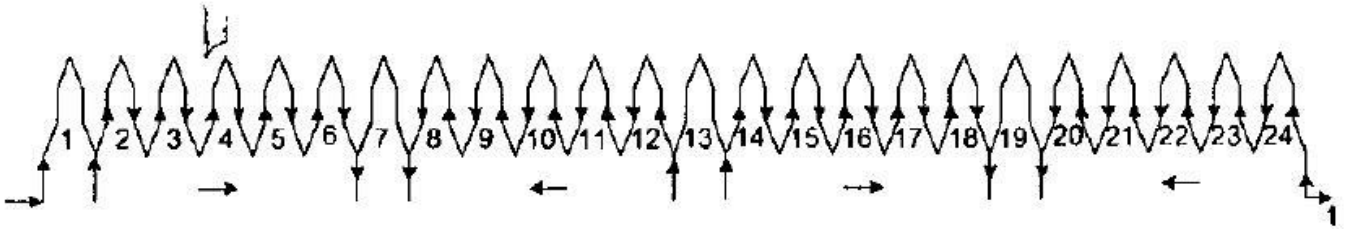
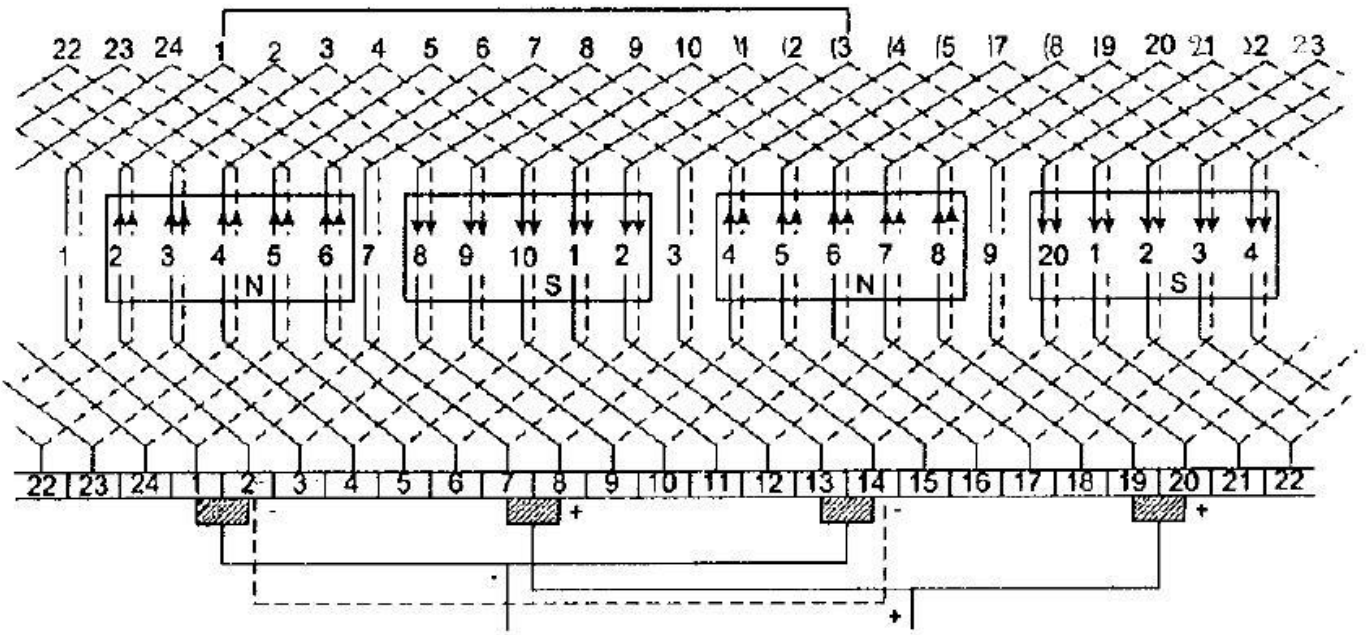
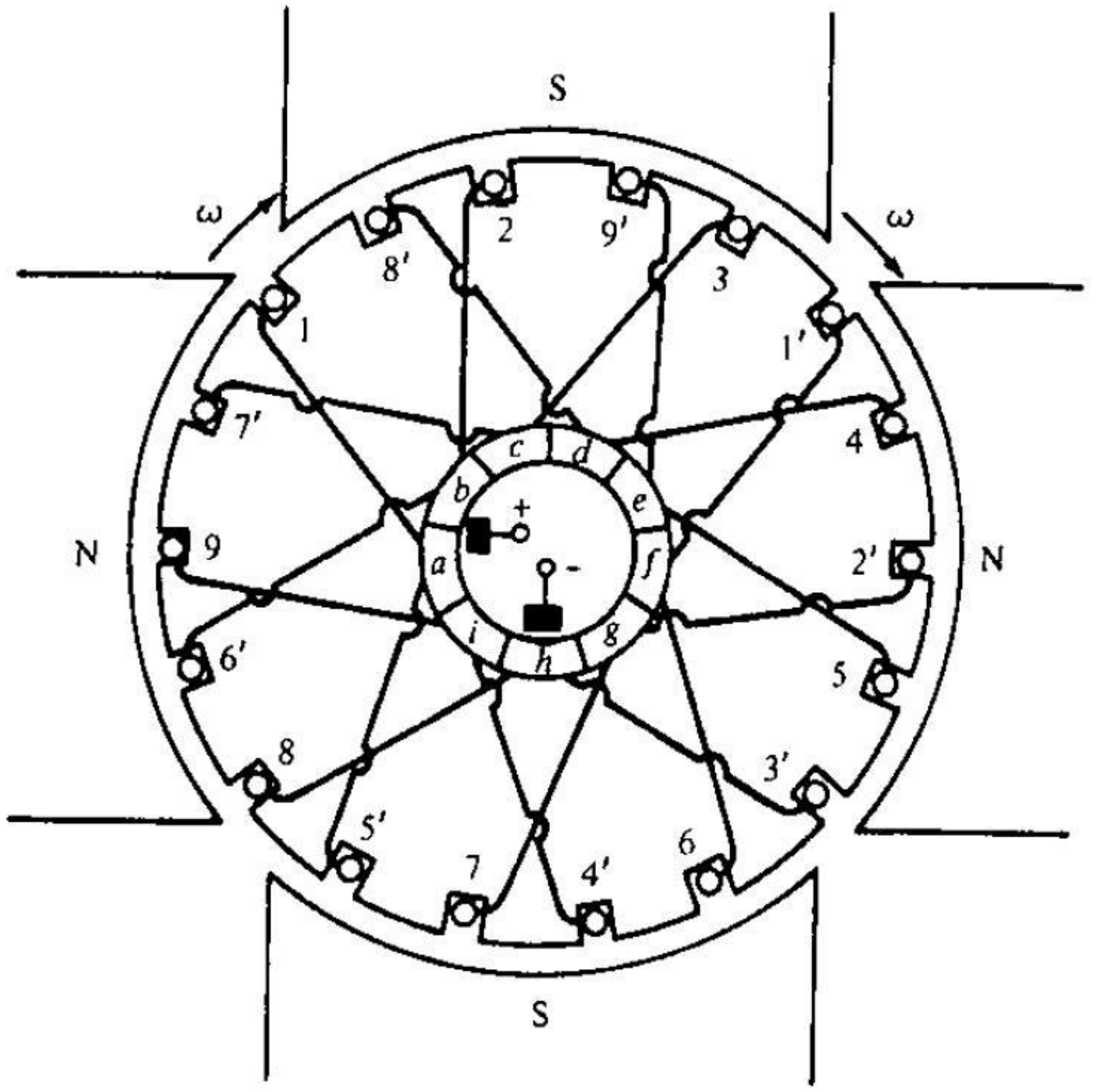


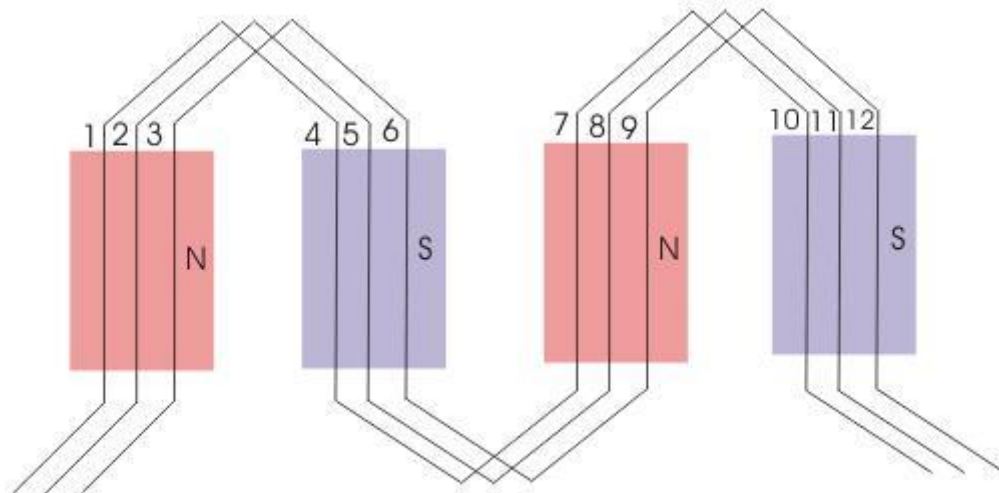
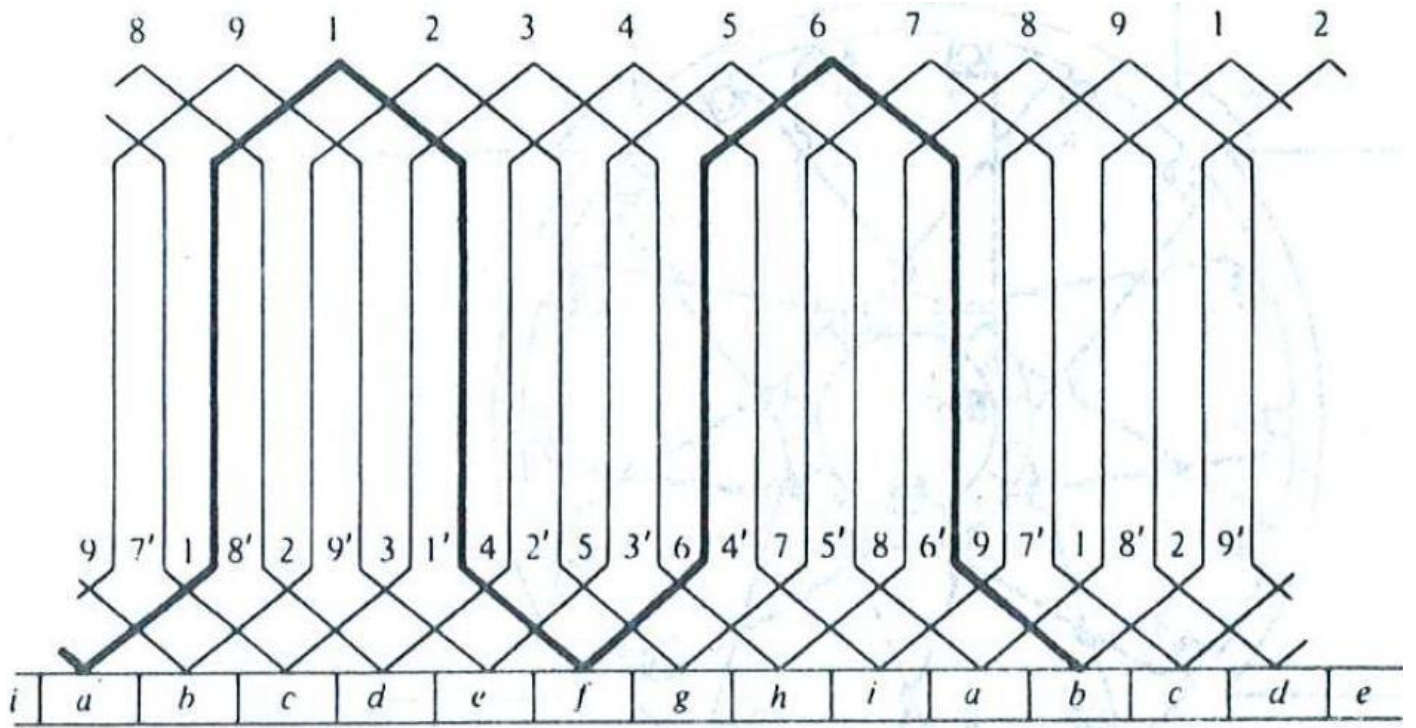
Fig - 2

جهت حرکت مولد

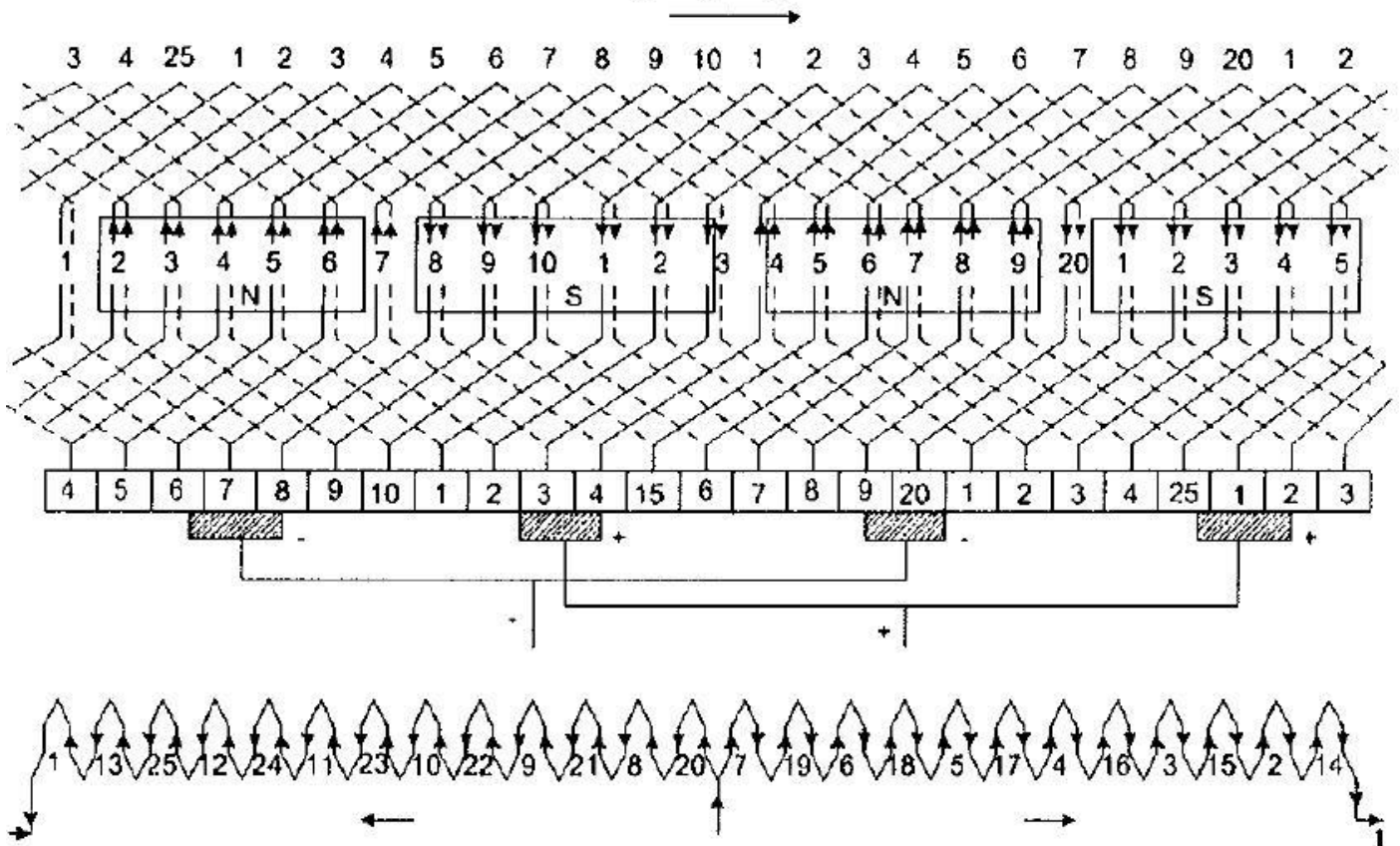


1

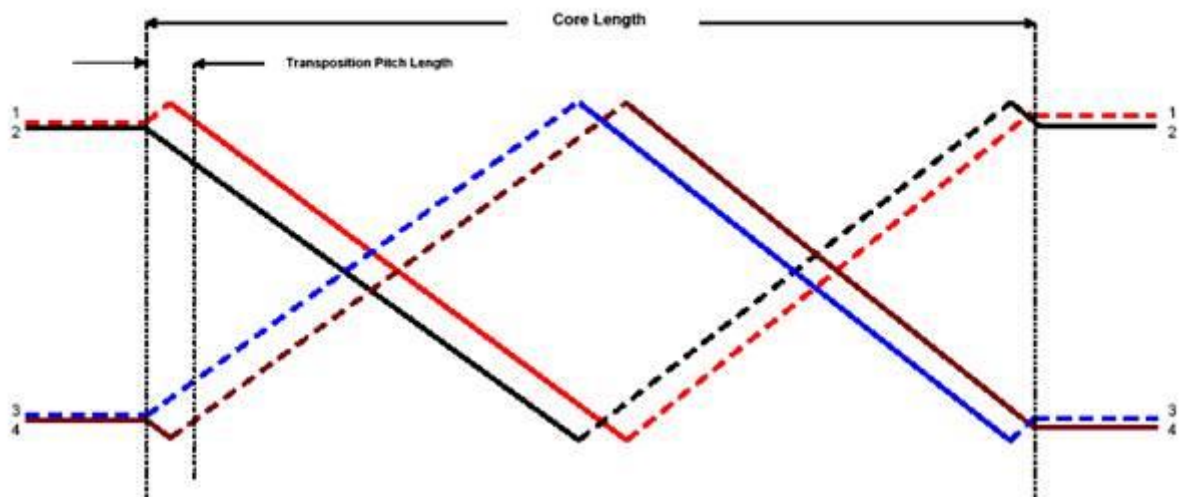




جهت حرکت مولد



### 360° Transposition



### 540° Transposition

